



## STAUBLI QUICK RELEASE COUPLINGS

Staubli has been a leading quick release-coupling specialist for over 40 years and has uniquely developed this range of couplings specifically for motorsport applications. Staubli couplings offer the variety, performance and the response needed for our industry.

**PLEASE ENSURE THAT YOU CHOOSE THE CORRECT COUPLING AND O-RING SEAL COMBINATION FOR YOUR APPLICATION. GENERALLY THIS WOULD MEAN VITON® FOR FUEL AND OIL AND JS3 COMPATIBLE FOR BRAKES**

Couplings are available in titanium and aluminium. To ensure you have the correct product for your specific need please contact our sales team, or request a copy of the full Staubli catalogue

### QDSPH

Flush faced, the QDSPH avoids any kind of pollution of the circuits: no spillage at disconnection and no air or impurities are introduced on re-connection. (pre-loading hoses a possibility). Quick release coupling, bayonet locking with simple push/rotation of sleeve, the QDSPH helps you save time during race servicing and offers a 'no-bleed' connection. Compact and light, in high tensile materials, this coupling has been specially developed for motor racing.

APPLICATION	SERIES NUMBER	FLOW DIAMETER
Brakes, clutch, hydraulics (in both versions)	QDSPH03 aluminium or titanium	3mm
	QDSPH04 aluminium or titanium	3mm
Power steering suspension hydraulics fuel circuits:FIA approved	QDSPH06 aluminium or titanium	5mm
Fuel supply, lubrication water circuits	QDSPH08 aluminium only	8mm

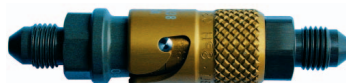
ALL COUPLINGS ARE AVAILABLE WITH VITON OR JS3 COMPATIBLE SEALS



QDSPH03/04



QDSPH06



QDSPH08

### QDSPT / QDRMI

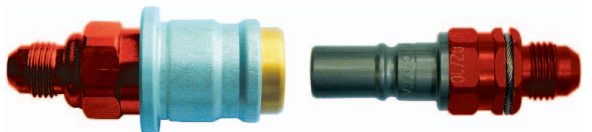
These couplings can be disconnected by lanyard, and are ideal for use on fuel systems. The QDSPT coupling is a 100% dry break, ensuring total safety in the event of impact. The QDRMI coupling is a quick disconnect which minimises fluid loss at disconnect.

APPLICATION	SERIES NUMBER	FLOW DIAMETER
Fuel sampling, safety break-away between engine and cockpit, oil, water - QDRMI 09 approved by FIA.	QDSPT06 aluminium only	8mm
	QDSPT08 aluminium only	8mm
	QDSPT10 aluminium only	8mm
	QDRM10906 aluminium only	9mm
	QDRM10908 aluminium only	9mm

ALL COUPLINGS ARE AVAILABLE WITH VITON OR JS3 COMPATIBLE SEALS



QDSPT



QDRMI

### QDSPT REFUELLING COUPLING

The refuelling coupling is used for secure connection onto fuel tanks. The socket is available with both -12 and M 35x1.5 threads.

APPLICATION	SERIES NUMBER	FLOW DIAMETER
fuel refuelling FIA approved	QDSPT12 aluminium only	12mm

ALL COUPLINGS ARE AVAILABLE WITH VITON OR JS3 COMPATIBLE SEALS



QDSPT12



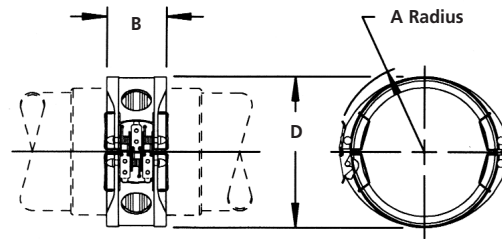
STAUBLI

PART NO.	DASH SIZE	DESCRIPTION	MATERIAL	SEAL TYPE	FLOW(MM) DIAMETER	APPLICATION
<b>BAYONET LOCKING 100% DRY BREAK COUPLING</b>						
QDSPH03DBF	-3	QDV Female Bulkhead	Alloy	EPDM	3	Brake / Clutch
QDSPH03DF	-3	QDV Female Coupling	Alloy	EPDM	3	Brake / Clutch
QDSPH03DM	-3	QDV Male Coupling	Alloy	EPDM	3	Brake / Clutch
QDSPH03DVF	-3	QDV Female Coupling	Alloy	VITON	3	Brake / Clutch
QDSPH03DVM	-3	QDV Male Coupling	Alloy	VITON	3	Brake / Clutch
QDSPH04DF	-4	QDV Female Coupling	Alloy	EPDM	3	Clutch / Hydraulics
QDSPH04DM	-4	QDV Male Coupling	Alloy	EPDM	3	Clutch / Hydraulics
QDSPH06DVF	-6	QDV Female Coupling	Alloy	VITON	5	Fuel / Oil / Water / Hydraulics
QDSPH06DBVF	-6	QDV Female Bulkhead	Alloy	VITON	5	Fuel / Oil / Water / Hydraulics
QDSPH06DVM	-6	QDV Male Coupling	Alloy	VITON	5	Fuel / Oil / Water / Hydraulics
QDSPH08DVF	-8	QDV Female Coupling	Alloy	VITON	8	Fuel / Oil / Water / Hydraulics
QDSPH08DVM	-8	QDV Male Coupling	Alloy	VITON	8	Fuel / Oil / Water / Hydraulics
<b>LANYARD DRY BREAK COUPLING</b>						
QDRM10906DVF	-6	QDV Female Coupling	Alloy	VITON	9	Fuel / Oil / Water / FIA Fuel Sampler
QDRM10906DVFL	-6	QDV Female Coupling(w/Lanyard)	Alloy	VITON	9	Fuel / Oil / Water / FIA Fuel Sampler
QDRM10906DVM	-6	QDV Male Coupling	Alloy	VITON	9	Fuel / Oil / Water / FIA Fuel Sampler
QDRM10908DVF	-8	QDV Female Coupling	Alloy	VITON	9	Fuel / Oil / Water / FIA Fuel Sampler
QDRM10908DVFL	-8	QDV Female Coupling(w/Lanyard)	Alloy	VITON	9	Fuel / Oil / Water / FIA Fuel Sampler
QDRM10908DM	-8	QDV Female Coupling	Alloy	VITON	9	Fuel / Oil / Water / FIA Fuel Sampler
<b>100% DRY BREAK COUPLING</b>						
QDSPT06DVF	-6	QDV Female Coupling	Alloy	VITON	8	Fuel / Oil / Water / FIA Fuel Sampler
QDSPT06DF	-6	QDV Female Coupling	Alloy	JS3	8	Fuel / Oil / Water / FIA Fuel Sampler
QDSPT06DVFL	-6	QDV Female Coupling(w/Lanyard)	Alloy	VITON	8	Fuel / Oil / Water / FIA Fuel Sampler
QDSPT06DFL	-6	QDV Female Coupling(w/Lanyard)	Alloy	JS3	8	Fuel / Oil / Water / FIA Fuel Sampler
QDSPT06DVM	-6	QDV Male Coupling	Alloy	VITON	8	Fuel / Oil / Water / FIA Fuel Sampler
QDSPT06DM	-6	QDV Male Coupling	Alloy	JS3	8	Fuel / Oil / Water / FIA Fuel Sampler
QDSPT08DVF	-8	QDV Female Coupling	Alloy	VITON	8	Fuel / Oil / Water / FIA Fuel Sampler
QDSPT08DF	-8	QDV Female Coupling	Alloy	JS3	8	Fuel / Oil / Water / FIA Fuel Sampler
QDSPT08DVFL	-8	QDV Female Coupling(w/Lanyard)	Alloy	VITON	8	Fuel / Oil / Water / FIA Fuel Sampler
QDSPT08DFL	-8	QDV Female Coupling(w/Lanyard)	Alloy	JS3	8	Fuel / Oil / Water / FIA Fuel Sampler
QDSPT08DVM	-8	QDV Male Coupling	Alloy	VITON	8	Fuel / Oil / Water / FIA Fuel Sampler
QDSPT08DM	-8	QDV Male Coupling	Alloy	JS3	8	Fuel / Oil / Water / FIA Fuel Sampler
QDSPT10DVF	-10	QDV Female	Alloy	VITON	10	Oil / Water
QDSPT10DF	-10	QDV Female	Alloy	EPDM	10	Oil / Water
QDSPT10DVM	-10	QDV Male	Alloy	VITON	10	Oil / Water
QDSPT10DM	-10	QDV Male	Alloy	EPDM	10	Oil / Water
QDSPT12DVF	-12	QDV Female Coupling	Alloy	VITON	12	FIA Fuel Filler
QDSPT12DVM	-12	QDV Male Coupling	Alloy	VITON	12	FIA Fuel Filler
<b>BAYONET LOCKING 100% DRY BREAK COUPLING (TITANIUM)</b>						
QDSPH03TVF	-3	QDV Female Coupling	Titanium	VITON	3	Brake / Clutch / Hydraulics
QDSPH03TVM	-3	QDV Male Coupling	Titanium	VITON	3	Brake / Clutch / Hydraulics
QDSPH03TF	-3	QDV Female Coupling	Titanium	EPDM	3	Brake / Clutch / Hydraulics
QDSPH03TM	-3	QDV Male Coupling	Titanium	EPDM	3	Brake / Clutch / Hydraulics
QDSPH04TVF	-4	QDV Female Coupling	Titanium	VITON	3	Fuel / Oil / Water / Hydraulics
QDSPH04TVM	-4	QDV Male Coupling	Titanium	VITON	3	Fuel / Oil / Water / Hydraulics
QDSPH04TF	-4	QDV Female Coupling	Titanium	EPDM	3	Fuel / Oil / Water / Hydraulics
QDSPH04TM	-4	QDV Male Coupling	Titanium	EPDM	3	Fuel / Oil / Water / Hydraulics
QDSPH06TVF	-6	QDV Female Coupling	Titanium	VITON	5	Fuel / Oil / Water / Hydraulics
QDSPH06TVM	-6	QDV Male Coupling	Titanium	VITON	5	Fuel / Oil / Water / Hydraulics



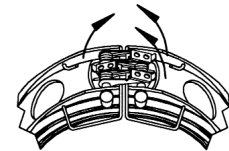
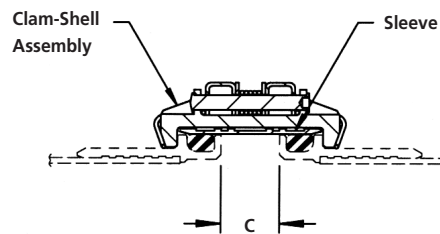
## HYDRAFLOW 14J SERIES FLEXIBLE FLUID COUPLINGS

The Hydraflow range is the dominant coupling of this type in world motorsport. It is particularly suitable and adaptable for the demands of top race teams. It can easily be removed with one hand but the closure design cannot be disengaged accidentally. Hydraflow couplings meet all the relevant aerospace and military specifications. We hold stock from -08(1/2") to -28(1 3/4") and we manufacture cup-end fittings specifically for use with our Hydraflow range. See G-Line section.



CONFORMS TO AS1650

Part Number Code	(14J02)	
Drawing Number		
Size Code		
Tube O.D. in Sixteenths of Inch		
Material Code		
A=Aluminium Alloy C=Stainless Steel		

**One**

Coupling assembly 14J02-(SIZE)(MATL) consists of:  
 14C02-(SIZE)(MATL) Clam-shell Assembly  
 14R02-(SIZE)(MATL) Sleeve

**Two**

Following items should be ordered separately.  
 Example:  
 14F02-(SIZE)(MATL) Swaged Flange (2 reqd.)  
 or  
 14F03-(SIZE)(MATL) Welded Flange (2 reqd.)  
 or  
 14F05-(SIZE)(MATL) Welded Flange (2 reqd.)  
 and  
 O-ring seal (2 reqd.)  
 O-ring seals are supplied separately.

**Locks Automatically** Clam-shell closure locks automatically when two halves are snapped together and cannot disengage accidentally since all three latch pawls must be lifted simultaneously to disengage the latch.

**Quick Disconnect** Quick disconnect action of the latch simplifies and facilitates assembly and removal with one hand.

**Easily Inspected** Visual inspection from a distance provides positive indication that the closure is fully engaged and securely locked.

**Flexible** Axial adjustment 1/4"; angular misalignment is  $\pm 4^\circ$  for full couplings.

**Meets Military/Commercial Requirements** Coupling design conforms to and has been qualified to all applicable military and commercial specification requirements for flexible fuel couplings, environmental control systems or potable water systems.

**Lightning** Protection is provided to at least 1500 amperes when tested per MIL-STD-1757A, method T03 using current component B waveshape.

**Self Bonding** Electrical bonding to class "S" of MIL-B-5087B is automatically provided when the coupling is assembled.

Please contact your nearest Goodridge Stockist for a complete technical sheet

SIZE TUBE O.D.	PART NUMBERS			SEAL SIZE REF AS568	DIMENSIONS				ASS'Y. WT. LBS	
	COUPLING ASSEMBLY	CLAM-SHELL ASSEMBLY	SLEEVE		A	B	C	D	ALUM	S/STEEL
.500	14J02-08 X	14C02-08 X	14R02-08 X	-015	.71	.72	.28	1.06	.028	.056
.625	14J02-10 X	14C02-10 X	14R02-10 X	-017	.78	.72	.28	1.16	.031	.058
.750	14J02-12 X	14C02-12 X	14R02-12 X	-117	.85	.82	.28	1.27	.039	.076
1.000	14J02-16 X	14C02-16 X	14R02-16 X	-214	.98	.91	.28	1.49	.049	.103
1.250	14J02-20 X	14C02-20 X	14R02-20 X	-218	1.11	.91	.28	1.74	.055	.117
1.500	14J02-24 X	14C02-24 X	14R02-24 X	-222	1.23	.91	.28	2.03	.061	.135
1.750	14J02-28 X	14C02-28 X	14R02-28 X	-224	1.36	.91	.28	2.24	.067	.149
2.000	14J02-32 X	14C02-32 X	14R02-32 X	-226	1.50	.95	.28	2.53	.080	.176
2.250	14J02-36 X	14C02-36 X	14R02-36 X	-228	1.63	.95	.28	2.87	.090	.203
2.500	14J02-40 X	14C02-40 X	14R02-40 X	-230	1.75	.95	.28	3.03	.094	.213
3.000	14J02-48 X	14C02-48 X	14R02-48 X	-234	2.03	.99	.28	3.69	.148	.335
3.500	14J02-56 X	14C02-56 X	14R02-56 X	-238	2.28	.99	.28	4.19	.177	.397
4.000	14J02-64 X	14C02-64 X	14R02-64 X	-242	2.53	.99	.25	4.79	.193	.435